

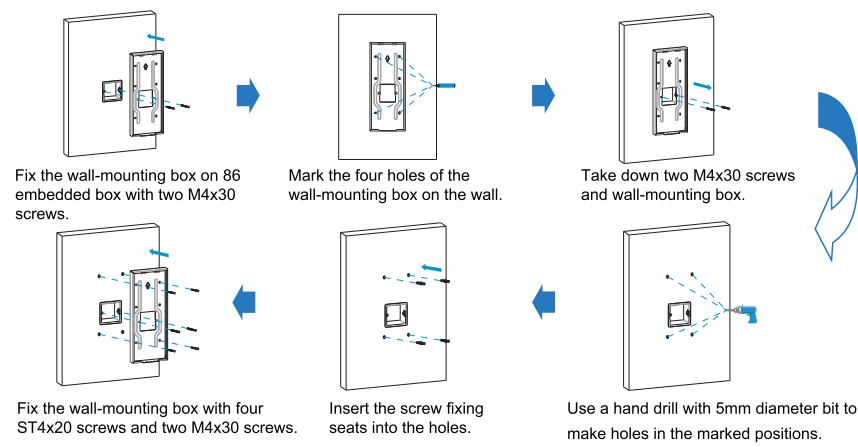
R29X Quick Guide

Installation

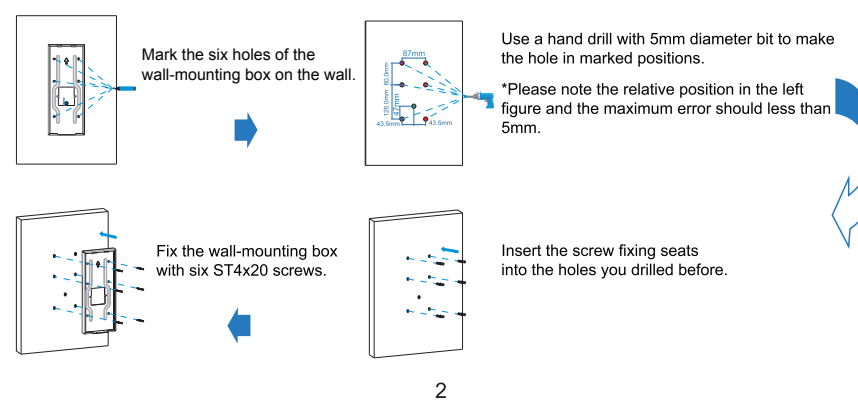
1. Step 1: Bracket/Box Installation

1.1 Wall Mounting

1.1.1 With 86 embedded box in the wall

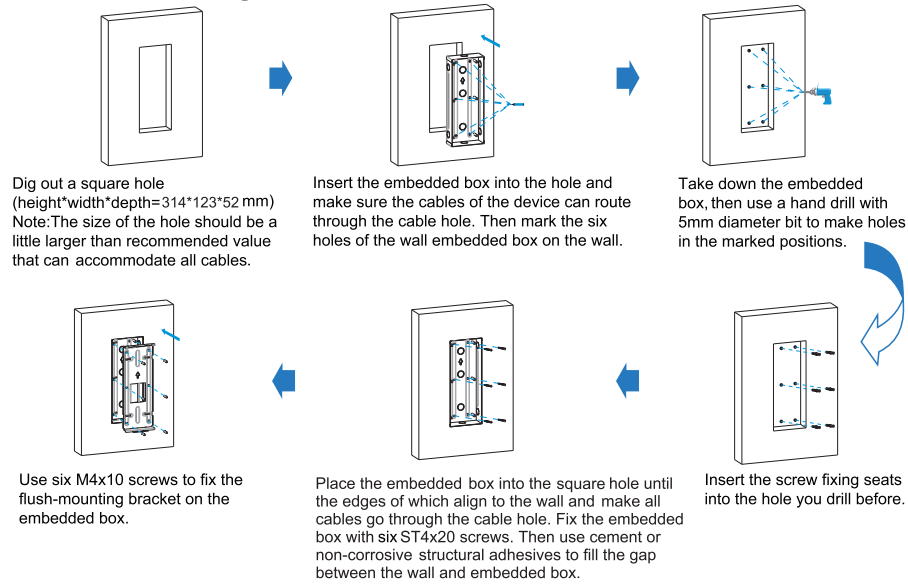


1.1.2 Without 86 embedded box in the wall

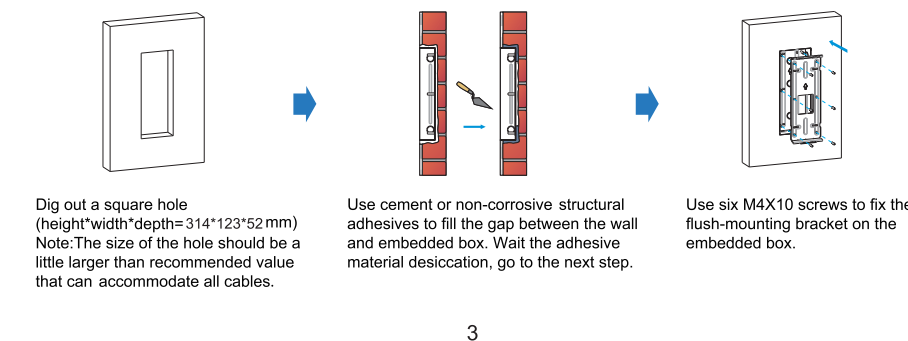


R29X Quick Guide

1.2 Flush Mounting

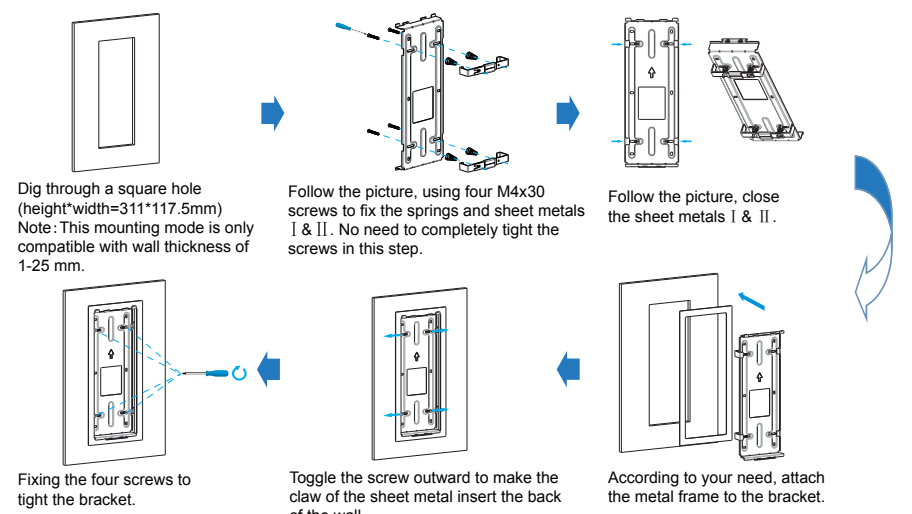


Or you can choose another simple method without fixing ST4x20 screws.

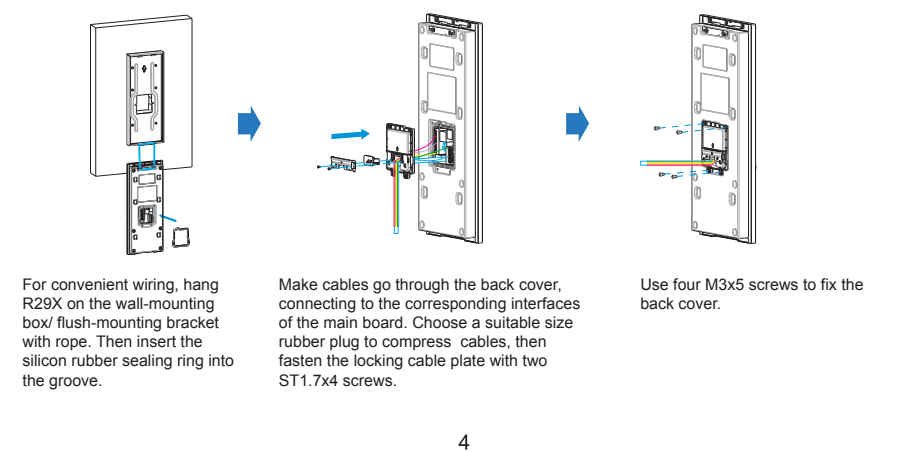


R29X Quick Guide

1.3 Plasterboard Mounting

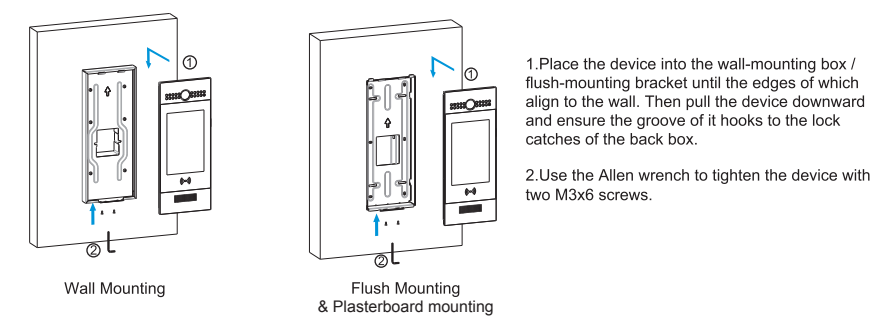


2. Step 2: Back cover Installation

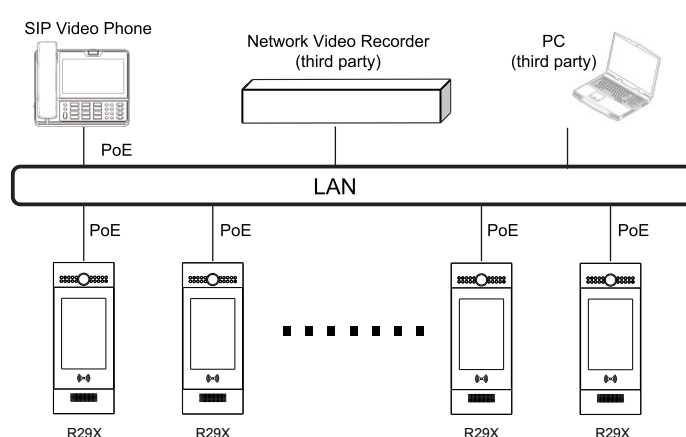


R29X Quick Guide

3. Step 3: Device Mounting



Application Scenario



R29X Quick Guide

Configuration

- 1.IP Address Checking: Press 9999 in dialing interface, then input 3888 to enter the system interface. Click Info to check the IP address. R29X uses DHCP by default.
- 2.Account Registration: On web UI, go to the path: **Account -> Basic** page to register account and fill in the account information. (*Please refer to user manual for more information*)
- 3.DTMF Code Configuration: On web UI, go to the path: **Intercom -> Relay -> Relay ID/DTMF** choose the DTMF code number in corresponding area.

Operation

Make a call:
Input the room number, press Dial key to make a call.

Receive a call:
R29X supports Auto Answer by default. Incoming calls will be answered automatically.

Unlock by DTMF:
During the call, press the corresponding DTMF code from answer unit to unlock R29X remotely.

Unlock by Private Key:
In the PIN/PASSWORD interface, enter the password to open the door.

Unlock by RF Card:
Place the predefined RF Card in the RF reader area to open the door.

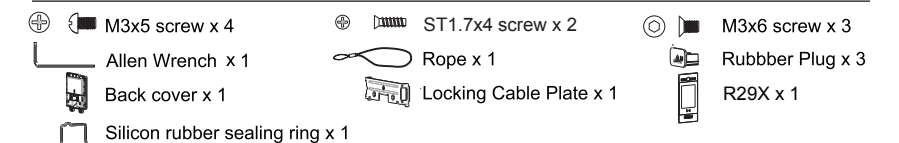


R29X Quick Guide

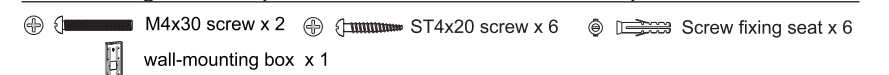
Unpacking

Before you begin using the device, please check the version you got and ensure that the following items are included in the shipped box:

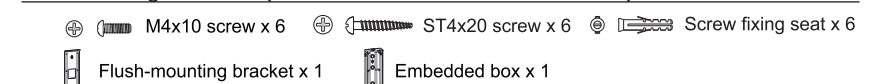
Mainframe Accessories:



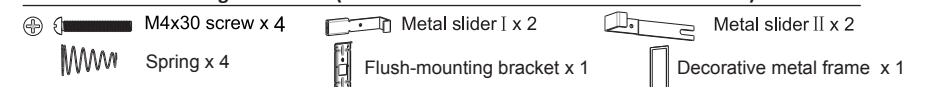
Wall Mounting Accessories(Please find in On-wall Installation Kit box):



Flush Mounting Accessories(Please find in In-wall Installation Kit box):



Plasterboard Mounting Accessories(Please find in Plasterboard Installation Kit box):



Product Overview

